

# The Products



# The benchmark







Scotsman has focused single-mindedly on ice making technologies since the first day: over 60 years of enthusiasm and experience to be and remain the first and the best.  
**Innovative by tradition.**





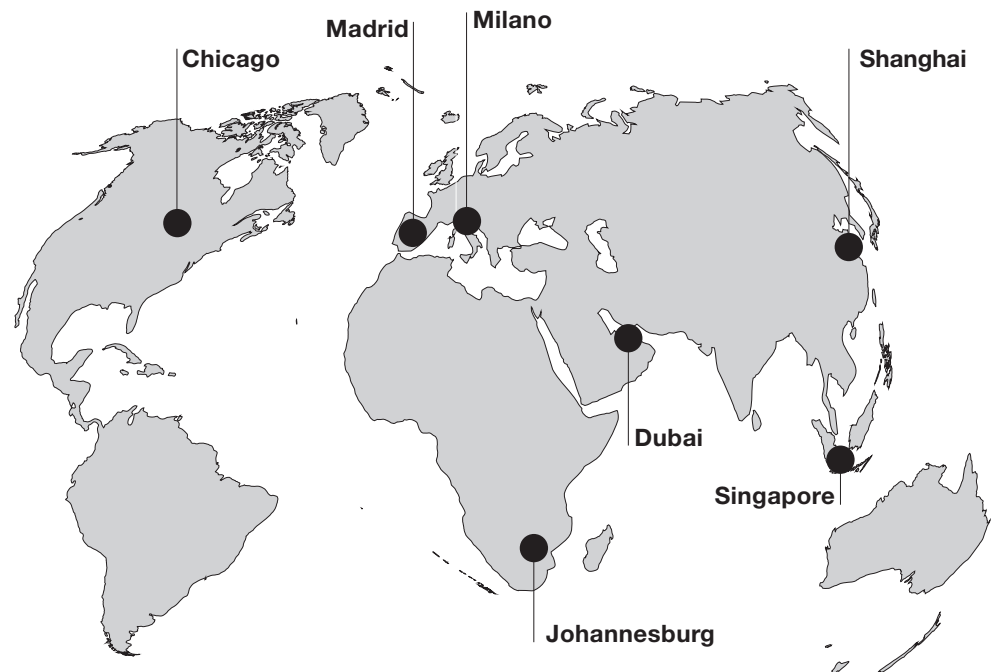
**Chicago**

**Shanghai**

**Milano**



# Worldwide footprint



Scotsman produces its extensive and high quality ranges of products in 3 factories located in the USA, ITALY and CHINA.

This includes a large presence in 85 countries from the Pacific Rim in the East to Canada in the West, with strategic offices and hubs in Europe, America and Asia.

**Over 1,000,000 Scotsman ice machines installed.**

# Ice and its shapes



## Gourmet Ice

Crystal clear, pure, hard and long lasting ice cubes.

Individually formed by spraying water onto a subcooled horizontal evaporator.

Its fast cooling action and slow dilution make drinks chilled for a long time.

Available in three different sizes and weights to meet any requirement in terms of ease of use and quality results.

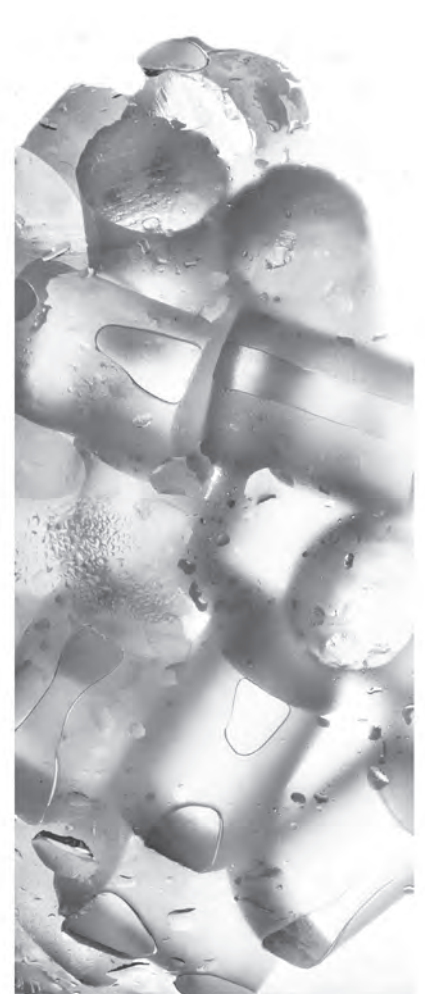


## Dice Ice

Classic six sides ice cube.

Its greater surface for heat exchange allows a fast chilling of all drinks.

The vertical evaporator technology of this ice cube guarantees large ice production at lower operating costs. Available in several different sizes, it is highly appreciated in QSR and coffee chains applications.



## Nugget & Cubelet Ice

Compressed flake ice available in two different types: Nugget, regular micro-cubes and Cubelet, irregular chips.

Nugget & Cubelet are suitable for multiple uses and are the fastest moving ice-type in QSR applications in the last few years.

Excellent when used with carbonated drinks as well as smoothies and perfect for food and plates display.

Long lasting, easy to use, high and fast displacement and hands-free dispensing: no wonder this type of ice is so successful!



## Flake Ice

Ice in its most natural shape, it is made at a temperature just below zero degrees Celsius.

Highly versatile and suitable for multiple applications: fish display counters, buffet display, frozen drinks preparation as well as fast chilling of wine & champagne buckets.

It comes in two different variations: Flake with 25% residual water content and Super Flake with 15% residual water content.



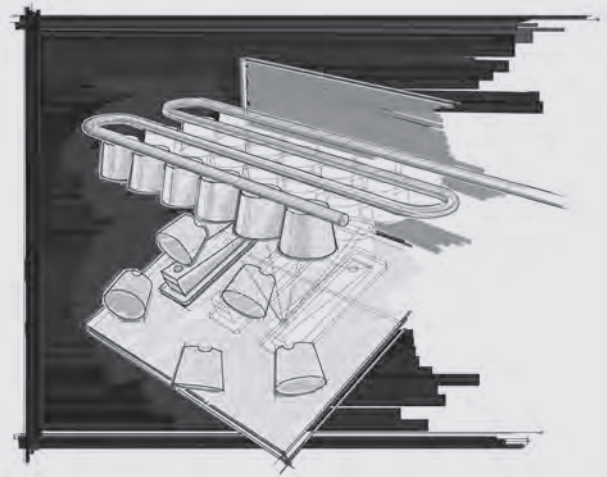
## Scale Ice

With less than 2% residual water content, it's very dry and it's the coldest form of ice.

It's made by irregular fragments of ice with a variable thickness that can be adjusted between 1 to 2 mm. Ideal for industrial processes, for fish and sea-food display and perishable goods transportation, as well as to optimize dough temperature.

Versatile, molding to any shape, melts at a slow and regular rate to keep food at maximum freshness.

# A top-class must: Gourmet ice makers



Ice horizontal evaporator and spray-system technology



**Small Gourmet**  
8 g / Ø 21 mm / H 25 mm



**Medium Gourmet**  
20 g / Ø 30 mm / H 34 mm



**Large Gourmet**  
39 g / Ø 38 mm / H 41 mm



**Extra Large Gourmet**  
60 g / Ø 44 mm / H 46 mm





# EC series: featuring Progressive Water Discharge



## EC 46

### Cube size:

Medium cube

### Condensing system:

Air cooled  
Water cooled

### Max daily production:

25 kg Medium cubes



### Storage bin capacity:

9 kg

### Dimensions:

W 386 mm  
D 600 mm  
H 645 mm

## EC 56

### Cube size:

Small cube  
Medium cube  
Large cube

### Condensing system:

Air cooled  
Water cooled

### Max daily production:

32 kg Medium cubes



### Storage bin capacity:

12 kg

### Dimensions:

W 386 mm  
D 600 mm  
H 695 mm

## EC 86

### Cube size:

Small cube  
Medium cube  
Large cube

### Condensing system:

Air cooled  
Water cooled

### Max daily production:

38 kg Medium cubes



### Storage bin capacity:

19 kg

### Dimensions:

W 531 mm  
D 600 mm  
H 785 mm / 825 mm with legs

## EC 106

### Cube size:

Medium cube  
Large cube

### Condensing system:

Air cooled  
Water cooled

### Max daily production:

50 kg Medium cubes



### Storage bin capacity:

23 kg

### Dimensions:

W 531 mm  
D 600 mm  
H 840 mm / 930 mm with legs

## Small and medium production



- **Agion:** the technology that makes products cleaner and longer lasting with built-in protection working 24/7 to resist the growth of microbes and the development of unpleasant odors.
- **Clean alert:** advises with a blink when it's time to clean the filter.
- **Electronic control:** ambient and water temperatures may change throughout the years but your ice machine will stay the same.
- **Front access condenser air filter:** a do-it-yourself cleaning operation that saves time and money and makes your ice maker live longer.
- **Individual transparent solid cube:** each single cube is an artwork: crystal clear and perfectly shaped, faithful to the Scotsman tradition.
- **Scale accumulation preventing system:** traps ice makers' enemy No. 1 in one place and makes it harmless.
- **Ergonomic access to ice with sliding disappearing door:** one-touch door lift, makes barman's life significantly easier.
- **PWD - Progressive Water Discharge:** pumps excess residual water up to a distance of 15 meters.
- **Built-in storage bin:** allows most undercounter installations for easier fit-in solutions.

## EC 126

### Cube size:

Small cube  
Medium cube  
Large cube

### Condensing system:

Air cooled  
Water cooled

### Max daily production:

70 kg Medium cubes



### Storage bin capacity:

39 kg

### Dimensions:

W 680 mm  
D 600 mm  
H 920 mm / 1009 mm with legs

## EC 176

### Cube size:

Small cube  
Medium cube  
Large cube

### Condensing system:

Air cooled  
Water cooled

### Max daily production:

85 kg Medium cubes



### Storage bin capacity:

48 kg

### Dimensions:

W 680 mm  
D 600 mm  
H 990 mm / 1079 mm with legs

## EC 206

### Cube size:

Small cube  
Medium cube  
Large cube  
Extra Large cube

### Condensing system:

Air cooled  
Water cooled

### Max daily production:

130 kg Medium cubes



### Storage bin capacity:

50 kg

### Dimensions:

W 1250 mm  
D 622 mm  
H 779 mm / 809 mm with legs

## EC 226

### Cube size:

Small cube  
Medium cube  
Large cube

### Condensing system:

Air cooled  
Water cooled

### Max daily production:

145 kg Medium cubes



### Storage bin capacity:

70 kg

### Dimensions:

W 1078 mm  
D 719 mm  
H 1004 mm / 1082 mm with legs

# EC series: featuring Progressive Water Discharge



## EC 47 EcoX

**Cube size:**  
Medium cube  
**Condensing system:**  
Air cooled  
**Max daily production:**  
25 kg Medium cubes



**Storage bin capacity:**  
9 kg  
**Dimensions:**  
W 386 mm  
D 600 mm  
H 645 mm

## EC 57 EcoX

**Cube size:**  
Medium cube  
**Condensing system:**  
Air cooled  
**Max daily production:**  
33 kg Medium cubes



**Storage bin capacity:**  
12 kg  
**Dimensions:**  
W 386 mm  
D 600 mm  
H 695 mm

## EC 87 EcoX

**Cube size:**  
Medium cube  
**Condensing system:**  
Air cooled  
**Max daily production:**  
44 kg Medium cubes



**Storage bin capacity:**  
19 kg  
**Dimensions:**  
W 531 mm  
D 600 mm  
H 785 mm / 825 mm with legs

## EC 107 EcoX

**Cube size:**  
Medium cube  
**Condensing system:**  
Air cooled  
**Max daily production:**  
53 kg Medium cubes



**Storage bin capacity:**  
23 kg  
**Dimensions:**  
W 531 mm  
D 600 mm  
H 840 mm / 930 mm with legs

## Small and medium production



- **Agion:** the technology that makes products cleaner and longer lasting with built-in protection working 24/7 to resist the growth of microbes and the development of unpleasant odors.
- **Clean alert:** advises with a blink when it's time to clean the filter.
- **Electronic control:** ambient and water temperatures may change throughout the years but your ice machine will stay the same.
- **Front access condenser air filter:** a do-it-yourself cleaning operation that saves time and money and makes your ice maker live longer.
- **Individual transparent solid cube:** each single cube is an artwork: crystal clear and perfectly shaped, faithful to the Scotsman tradition.
- **Scale accumulation preventing system:** traps ice makers' enemy No. 1 in one place and makes it harmless.
- **Ergonomic access to ice with sliding disappearing door:** one-touch door lift, makes barman's life significantly easier.
- **PWD - Progressive Water Discharge:** pumps excess residual water up to a distance of 15 meters.
- **Built-in storage bin:** allows most undercounter installations for easier fit-in solutions.
- **EcoX:** products using Natural refrigerants only, Hydrocarbons R290 and Carbon Dioxide R744.
- **The full EcoX range is available on AC series as well.**

**EC 127** EcoX  
**Cube size:**  
 Medium cube  
**Condensing system:**  
 Air cooled  
**Max daily production:**  
 75 kg Medium cubes



**Storage bin capacity:**  
 39 kg  
**Dimensions:**  
 W 680 mm  
 D 600 mm  
 H 920 mm / 1009 mm with legs

**EC 177** EcoX  
**Cube size:**  
 Medium cube  
**Condensing system:**  
 Air cooled  
**Max daily production:**  
 84 kg Medium cubes



**Storage bin capacity:**  
 48 kg  
**Dimensions:**  
 W 680 mm  
 D 600 mm  
 H 990 mm / 1079 mm with legs

## DXG 35

**Cube size:**  
 Medium cube  
**Condensing system:**  
 Air cooled  
 Water cooled  
**Max daily production:**  
 29 kg Medium cubes



**Storage bin capacity:**  
 11 kg  
**Dimensions:**  
 W 380 mm  
 D 515 mm  
 H 1606 mm / 1696 with legs

## Dispenser

# AC series



## AC 46

### Cube size:

Medium cube

### Condensing system:

Air cooled

Water cooled

### Max daily production:

25 kg Medium cubes



### Storage bin capacity:

9 kg

### Dimensions:

W 386 mm

D 600 mm

H 645 mm

## AC 56

### Cube size:

Small cube

Medium cube

Large cube

### Condensing system:

Air cooled

Water cooled

### Max daily production:

32 kg Medium cubes



### Storage bin capacity:

12 kg

### Dimensions:

W 386 mm

D 600 mm

H 695 mm

## AC 86

### Cube size:

Small cube

Medium cube

Large cube

### Condensing system:

Air cooled

Water cooled

### Max daily production:

38 kg Medium cubes



### Storage bin capacity:

19 kg

### Dimensions:

W 531 mm

D 600 mm

H 785 mm / 875 mm with legs

## AC 106

### Cube size:

Medium cube

Large cube

### Condensing system:

Air cooled

Water cooled

### Max daily production:

50 kg Medium cubes



### Storage bin capacity:

23 kg

### Dimensions:

W 531 mm

D 600 mm

H 840 mm / 930 mm with legs

## Small and medium production



- **Agion:** the technology that makes products cleaner and longer lasting with built-in protection working 24/7 to resist the growth of microbes and the development of unpleasant odors.
- **Clean alert:** advises with a blink when it's time to clean the filter.
- **Electronic control:** ambient and water temperatures may change throughout the years but your ice machine will stay the same.
- **Front access condenser air filter:** a do-it-yourself cleaning operation that saves time and money and makes your ice maker live longer.
- **Individual transparent solid cube:** each single cube is an artwork: crystal clear and perfectly shaped, faithful to the Scotsman tradition.
- **Scale accumulation preventing system:** traps ice makers' enemy No. 1 in one place and makes it harmless.
- **Ergonomic access to ice with sliding disappearing door:** one-touch door lift, makes barman's life significantly easier.
- **Built-in storage bin:** allows most undercounter installations for easier fit-in solutions.
- **EcoX:** the AC series is available in the EcoX version, using Natural Refrigerants only, Hydrocarbons R290.

## AC 126

### Cube size:

Small cube  
Medium cube  
Large cube

### Condensing system:

Air cooled  
Water cooled

### Max daily production:

70 kg Medium cubes



### Storage bin capacity:

39 kg

### Dimensions:

W 680 mm  
D 600 mm  
H 920 mm / 1009 mm with legs

## AC 176

### Cube size:

Small cube  
Medium cube  
Large cube

### Condensing system:

Air cooled  
Water cooled

### Max daily production:

85 kg Medium cubes



### Storage bin capacity:

48 kg

### Dimensions:

W 680 mm  
D 600 mm  
H 990 mm / 1079 mm with legs

## AC 206

### Cube size:

Small cube  
Medium cube  
Medium cube  
Large cube  
Extra Large cube

### Condensing system:

Air cooled  
Water cooled

### Max daily production:

130 kg Medium cubes



### Storage bin capacity:

50 kg

### Dimensions:

W 1250 mm  
D 622 mm  
H 779 mm / 859 mm with legs

## AC 226

### Cube size:

Small cube  
Medium cube  
Large cube

### Condensing system:

Air cooled  
Water cooled

### Max daily production:

145 kg Medium cubes



### Storage bin capacity:

70 kg

### Dimensions:

W 1078 mm  
D 719 mm  
H 1004 mm / 1082 mm with legs

# MXG series



## MXG 327 EcoX

**Cube size:**

Medium cube

**Condensing system:**

Air cooled

**Max daily production:**

152 kg Medium cubes



**Dimensions (Head only):**

W 568 mm

D 704 mm

H 721 mm

**Recommended bins:**

SB 193, SB 322

## MXG 328

**Cube size:**

Small cube

Medium cube

Large cube

**Condensing system:**

Air cooled

Water cooled

**Max daily production:**

150 kg Medium cubes



**Dimensions (Head only):**

W 568 mm

D 704 mm

H 721 mm

**Recommended bins:**

SB 193, SB 322

## MXG 427 EcoX

**Cube size:**

Medium cube

**Condensing system:**

Air cooled

**Max daily production:**

170 kg Medium cubes



**Dimensions (Head only):**

W 568 mm

D 704 mm

H 721 mm

**Recommended bins:**

SB 193, SB 322

## MXG 428

**Cube size:**

Small cube

Medium cube

Large cube

**Condensing system:**

Air cooled

Water cooled

**Max daily production:**

190 kg Medium cubes



**Dimensions (Head only):**

W 568 mm

D 704 mm

H 721 mm

**Recommended bins:**

SB 193, SB 322

## High production

EXTREME



- **Agion:** the technology that makes products cleaner and longer lasting with built-in protection working 24/7 to resist the growth of microbes and the development of unpleasant odors.
- **Electronic control:** ambient and water temperatures may change throughout the years but your ice machine will stay the same.
- **External indicator lights:** keep ice maker's operations under constant surveillance.
- **Front access condenser air filter:** a do-it-yourself cleaning operation that saves time and money and makes your ice maker live longer.
- **Global standard footprint:** strictly follows international imperial standards commonly adopted in the industry of reference.
- **Clean alert:** advises with a blink when it's time to clean the filter.
- **Individual transparent solid cube:** each single cube is an artwork: crystal clear and perfectly shaped, faithful to the Scotsman tradition.
- **Head only ice maker:** requires a separate storage bin to store the ice produced.\*
- **EcoX:** products using Natural refrigerants only, Hydrocarbons R290 and Carbon Dioxide R744.

### MXG 437 EcoX

**Cube size:**  
Medium cube  
**Condensing system:**  
Air cooled  
**Max daily production:**  
170 kg Medium cubes



**Dimensions (Head only):**  
W 773 mm  
D 705 mm  
H 721 mm  
**Recommended bins:**  
SB 393, SB 530

### MXG 438

**Cube size:**  
Small cube  
Medium cube  
Large cube  
**Condensing system:**  
Air cooled  
Water cooled  
Air cooled remote  
**Max daily production:**  
190 kg Medium cubes



**Dimensions (Head only):**  
W 773 mm  
D 704 mm  
H 721 mm  
**Recommended bins:**  
SB 393, SB 530

### MXG 638

**Cube size:**  
Small cube  
Medium cube  
Large cube  
Extra Large cube  
**Condensing system:**  
Air cooled  
Water cooled  
Air cooled remote  
**Max daily production:**  
330 kg Medium cubes



**Dimensions (Head only):**  
W 773 mm  
D 704 mm  
H 1128 mm  
**Recommended bins:**  
SB 393, SB 530

### MXG 938

**Cube size:**  
Medium cube  
Large cube  
**Condensing system:**  
Air cooled  
Water cooled  
Air cooled remote  
**Max daily production:**  
400 kg Medium cubes



**Dimensions (Head only):**  
W 773 mm  
D 704 mm  
H 1236 mm  
**Recommended bins:**  
SB 393, SB 530

\* For all possible bin combinations available, please refer to chart at page 48.



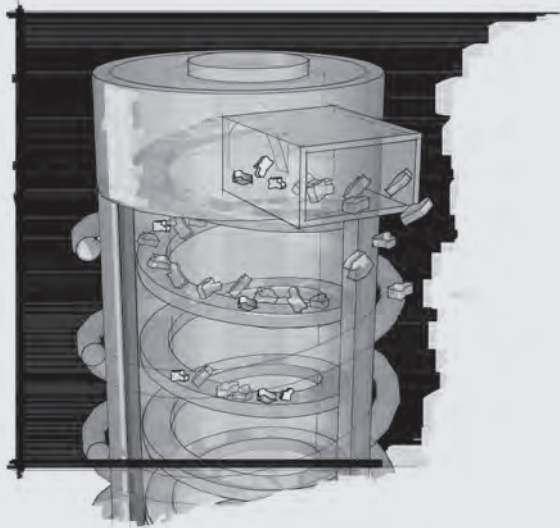
**Made for harsh and  
extreme environments**







# The pure and simple: Nugget & Cubelet ice makers



Ice vertical evaporator



## **Nugget**

1 g / Ø 11 mm / H 13 mm  
Residual water content 8%



## **Cubelet**

1 g / W 16 mm / D 15 x 7-8 mm  
Residual water content 8%

---



# The universal ice: Nugget



## MFN 46

### Ice type:

Nugget

### Condensing system:

Air cooled

Water cooled

### Max daily production:

270 kg



### Dimensions (Head only):

W 538 mm

D 663 mm

H 645 mm

### Recommended bins:

SB 193, SB 322

## MFN 56

### Ice type:

Nugget

### Condensing system:

Air cooled

Water cooled

### Max daily production:

485 kg



### Dimensions (Head only):

W 538 mm

D 663 mm

H 785 mm

### Recommended bins:

SB 393, SB 530



## High production



- **Agion:** the technology that makes products cleaner and longer lasting with built-in protection working 24/7 to resist the growth of microbes and the development of unpleasant odors.
- **Electronic control:** ambient and water temperatures may change throughout the years but your ice machine will stay the same.
- **External indicator lights:** keep ice machine's operations under constant surveillance.
- **Plug-and-work technology:** starts off and constantly produces ice thanks to a no-cycle harvesting system.
- **Water in / ice out concept (no cycles, zero water wastage):** limits to almost zero excess energy, water and time wastage.
- **Head only ice maker:** requires a separate storage bin to store the ice produced.\*

## MFN 86

**Ice type:**

Nugget

**Condensing system:**

Air cooled

Water cooled

**Max daily production:**

1900 kg



**Dimensions:**

W 1080 mm

D 780 mm+185

H 1140 mm / 1255 mm with legs

**Recommended bins:**

UBH 2250, SIS 1350

## MFN 88 Split

**Ice type:**

Nugget

**Condensing system:**

For connection to dedicated or centralized refrigeration system

**Max daily production:**

2000 kg



**Dimensions:**

W 540 mm

D 777 + 185 mm

H 1139 mm / 1254 mm with legs

# High production

\* For all possible bin combinations available, please refer to chart at page 48.

# The chewable ice: Cubelet



## DXN 100

**Ice type:**

Cubelet

**Condensing system:**

Air cooled

**Max daily production:**

66 kg

**Serving in peak time:** 100

**Serving per day:** 1200



**Storage bin capacity:**

5 kg

**Dimensions:**

W 427 mm

D 552 mm

H 622 mm

## DXN 107 EcoX

**Ice type:**

Cubelet

**Condensing system:**

Air cooled

**Max daily production:**

70 kg

**Serving in peak time:** 100

**Serving per day:** 1200



**Storage bin capacity:**

5 kg

**Dimensions:**

W 427 mm

D 552 mm

H 622 mm

## DXN 200

**Ice type:**

Cubelet

**Condensing system:**

Air cooled

**Max daily production:**

110 kg

**Serving in peak time:** 200

**Serving per day:** 2400



**Storage bin capacity:**

10 kg

**Dimensions:**

W 427 mm

D 552 mm

H 772 mm

## DXN 207 EcoX

**Ice type:**

Cubelet

**Condensing system:**

Air cooled

**Max daily production:**

100 kg

**Serving in peak time:** 200

**Serving per day:** 2400



**Storage bin capacity:**

10 kg

**Dimensions:**

W 427 mm

D 552 mm

H 772 mm

# Dispensers

EXTREME

#### DXN series

- **Agion:** the technology that makes products cleaner and longer lasting with built-in protection working 24/7 to resist the growth of microbes and the development of unpleasant odors.
- **Appealing design:** it can be smartly positioned in any situation, from luxury lounges to unconventional traditional pubs, allowing customers to cool their drinks to their own taste, without any hygiene hazards.
- **Display: appealing frontal all-black touch screen display.** Touch-activated or touch-free version.
- Large flow of ice in a small footprint. Simple serviceability.
- Extractable washable drip tray and anti-clog drain filter.
- **EcoX:** products using Natural refrigerants only, Hydrocarbons R290 and Carbon Dioxide R744.

#### AFC series

- **Agion:** the technology that makes products cleaner and longer lasting with built-in protection working 24/7 to resist the growth of microbes and the development of unpleasant odors.
- **Electronic control:** ambient and water temperatures may change throughout the years but your ice maker will stay the same.
- **Front access condenser air filter:** a do-it-yourself cleaning operation that saves time and money and makes your ice maker live longer (only AFC 134).
- **PWD - Progressive Water Discharge (optional):** pumps excess residual water up to a distance of 15 meters (only AFC 134).
- **Built-in storage bin:** allows undercounter installations for easier fit-in solution.

#### AFC 80

##### Ice type:

Cubelet

##### Condensing system:

Air cooled

Water cooled

##### Max daily production:

79 kg



##### Storage bin capacity:

25 kg

##### Dimensions:

W 535 mm

D 620 mm

H 797 mm / 890 mm with legs

#### AFC 134

##### Ice type:

Cubelet

##### Condensing system:

Air cooled

Water cooled

##### Optional:

PWD - Progressive Water Discharge

##### Max daily production:

130 kg



##### Storage bin capacity:

40 kg

##### Dimensions:

W 950 mm

D 605 mm

H 789 mm / 872 mm with legs

## Medium production



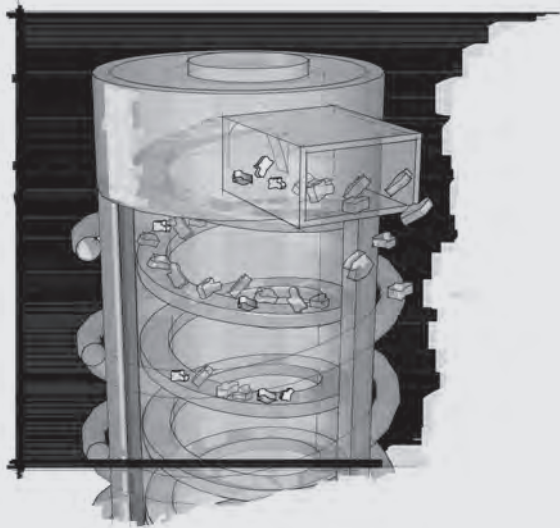


# Escaping the heat





# The pure freshness: Flake ice makers



Ice evaporator and stainless steel auger



## **Flake Ice**

Residual water content 25%



## **Superflake Ice**

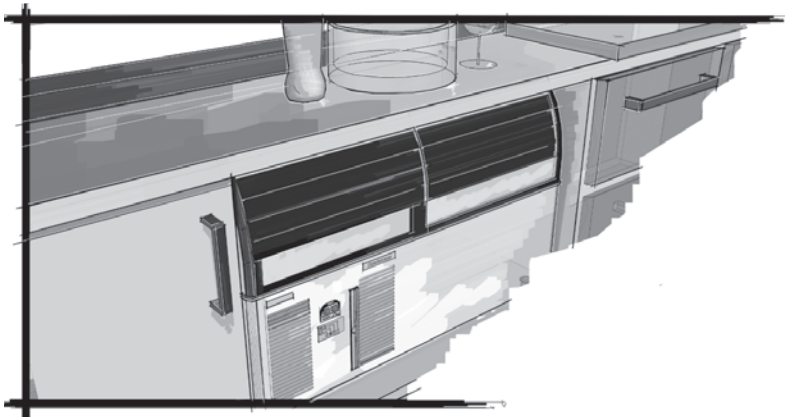
Residual water content 15%

---





# Flaker series



## AF 80

### Ice type:

Flake

### Condensing system:

Air cooled  
Water cooled

### Max daily production:

70 kg



### Storage bin capacity:

25 kg

### Dimensions:

W 535 mm  
D 620 mm  
H 797 mm / 890 mm with legs

## AF 103

### Ice type:

Flake

### Condensing system:

Air cooled  
Water cooled

### Optional:

PWD - Progressive Water Discharge

### Max daily production:

120 kg



### Storage bin capacity:

30 kg

### Dimensions:

W 592 mm  
D 622 mm  
H 997 mm / 1078 mm with legs

## AF 124

### Ice type:

Flake

### Condensing system:

Air cooled  
Water cooled

### Optional:

PWD - Progressive Water Discharge

### Max daily production:

122 kg



### Storage bin capacity:

40 kg

### Dimensions:

W 950 mm  
D 605 mm  
H 789 mm / 872 mm with legs

## AF 156

### Ice type:

Flake

### Condensing system:

Air cooled  
Water cooled

### Optional:

PWD - Progressive Water Discharge

### Max daily production:

150 kg



### Storage bin capacity:

60 kg

### Dimensions:

W 950 mm  
D 605 mm  
H 1000 mm / 1083 mm with legs

## Small and medium production

- **Agion:** the technology that makes products cleaner and longer lasting with built-in protection working 24/7 to resist the growth of microbes and the development of unpleasant odors.
- **Clean alert:** advises with a blink when it's time to clean the filter.
- **Electronic control:** ambient and water temperatures may change throughout the years but your ice maker will stay the same.
- **Front access condenser air filter:** a do-it-yourself cleaning operation that saves time and money and makes your ice maker live longer.
- **PWD - Progressive Water Discharge (optional on AF series):** pumps excess residual water up to a distance of 15 meters.
- **Water in / ice out concept (no cycles, zero water wastage):** limits to almost zero excess energy, water and time wastage.
- **Ergonomic access to ice with sliding disappearing door:** one-touch door lift, makes barman's life significantly easier.
- **AF series - built-in storage bin:** allows most undercounter installations for easier fit-in solutions.
- **MF series - head only ice maker:** requires a separate storage bin to store the ice produced.\*

## AF 206

### Ice type:

Flake

### Condensing system:

Air cooled

Water cooled

### Optional:

PWD - Progressive Water Discharge

### Max daily production:

200 kg



### Storage bin capacity:

60 kg

### Dimensions:

W 950 mm

D 605 mm

H 1000 mm / 1083 mm with legs

## MF 26

### Ice type:

Flake

### Condensing system:

Air cooled

Water cooled

### Max daily production:

120 kg



### Dimensions (Head only):

W 563 mm

D 536 mm

H 531 mm

### Recommended bins:

SB 193, SB 322

## MF 36

### Ice type:

Flake

### Condensing system:

Air cooled

Water cooled

### Max daily production:

200 kg



### Dimensions (Head only):

W 563 mm

D 536 mm

H 531 mm

### Recommended bins:

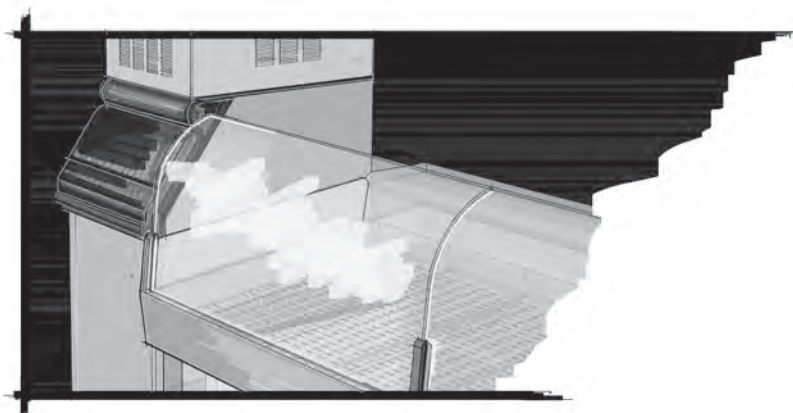
SB 193, SB 322

## High production

\* For all possible bin combinations available, please refer to chart at page 48.



# Flaker series



## MF 46

### Ice type:

Superflake

### Condensing system:

Air cooled

Water cooled

### Max daily production:

320 kg



### Dimensions (Head only):

W 538 mm

D 663 mm

H 645 mm

### Recommended bins:

SB 193, SB 322

## MF 47 EcoX

### Ice type:

Superflake

### Condensing system:

Air cooled

### Max daily production:

300 kg



### Dimensions (Head only):

W 538 mm

D 663 mm

H 645 mm

### Recommended bins:

SB 193, SB 322

## MF 56

### Ice type:

Superflake

### Condensing system:

Air cooled

Water cooled

Air cooled remote

### Max daily production:

600 kg



### Dimensions (Head only):

W 538 mm

D 663 mm

H 785 mm

### Recommended bins:

SB 393, SB 530, SB 948, SB 1025

## MF 58 Split

### Ice type:

Superflake

### Condensing system:

For connection to dedicated or centralized refrigeration system

### Max daily production:

600 kg



### Dimensions (Head only):

W 538 mm

D 663 mm

H 794 mm

### Recommended bins:

SB 530, SB 948, SB 1025

## High production

- **Agion:** the technology that makes products cleaner and longer lasting with built-in protection working 24/7 to resist the growth of microbes and the development of unpleasant odors.
- **Electronic control:** ambient and water temperatures may change throughout the years but your ice maker will stay the same.
- **External indicator lights:** keeps ice maker's operations under constant surveillance.
- **Plug-and-work technology:** starts off and constantly produces ice thanks to a no-cycle harvesting system.
- **Global standard footprint:** strictly follows international imperial standards commonly adopted in the industry of reference.
- **Water in / ice out concept (no cycles, zero water wastage):** limits to almost zero excess energy, water and time wastage.
- **Head only ice maker:** requires a separate storage bin to store the ice produced.\*
- **EcoX:** products using Natural refrigerants only, Hydrocarbons R290 and Carbon Dioxide R744.

## MF 59 EcoX

**Ice type:**

Superflake

**Condensing system:**

For connection to dedicated or centralized refrigeration system

**Max daily production:**

700 kg



### Dimensions (Head only):

W 538 mm

D 663 mm

H 794 mm

**Recommended bins:**

SB 393, SB 530

## MF 66

**Ice type:**

Superflake

**Condensing system:**

Air cooled

Water cooled

Air cooled remote

**Max daily production:**

1150 kg



### Dimensions (Head only):

W 1065 mm

D 698 mm

H 850 mm

**Recommended bins:**

SB 948, SB 1025, UBH 1100, UBH 1600

## MF 68 Split

**Ice type:**

Superflake

**Condensing system:**

For connection to dedicated or centralized refrigeration system

**Max daily production:**

1150 kg



### Dimensions (Head only):

W 538 mm

D 663 mm

H 794 mm

**Recommended bins:**

SB 948, SB 1025, UBH 1100, UBH 1600

\* For all possible bin combinations available, please refer to chart at page 48.

## MF 69 Split EcoX

### Ice type:

Superflake

### Condensing system:

For connection to dedicated or centralized refrigeration system

### Max daily production:

1400 kg



### Dimensions (Head only):

W 538 mm

D 663 mm

H 794 mm

### Recommended bins:

SB 948, SB 1025, UBH 1100, UBH 1600

## MF 86

### Ice type:

Superflake

### Condensing system:

Air cooled

Water cooled

Air cooled remote

### Max daily production:

2400 kg



### Dimensions:

W 1080 mm

D 780 mm + 185 mm

H 1140 mm / 1255 mm with legs

### Recommended bins:

UBH 2250, SIS 1350

## MF 88 Split

### Ice type:

Superflake

### Condensing system:

For connection to dedicated or centralized refrigeration system

### Max daily production:

2500 kg



### Dimensions:

W 540 mm

D 777 mm + 185 mm

H 1139 mm / 1254 mm with legs

### Recommended bins:

UBH 2250, SIS 1350

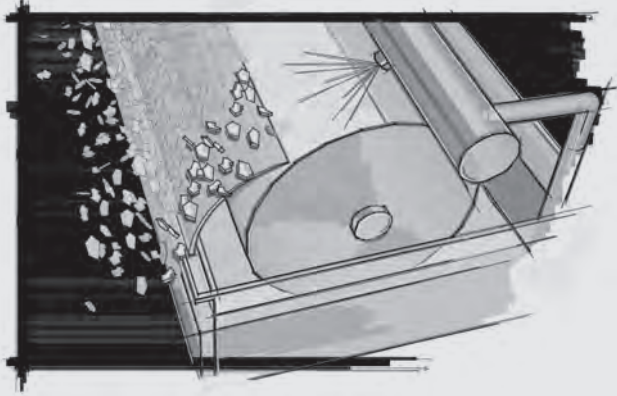
# High production

\* For all possible bin combinations available, please refer to chart at page 48



**Delivering pure freshness**

# The tough guys: Scale ice makers



The drum



## **Scale Ice**

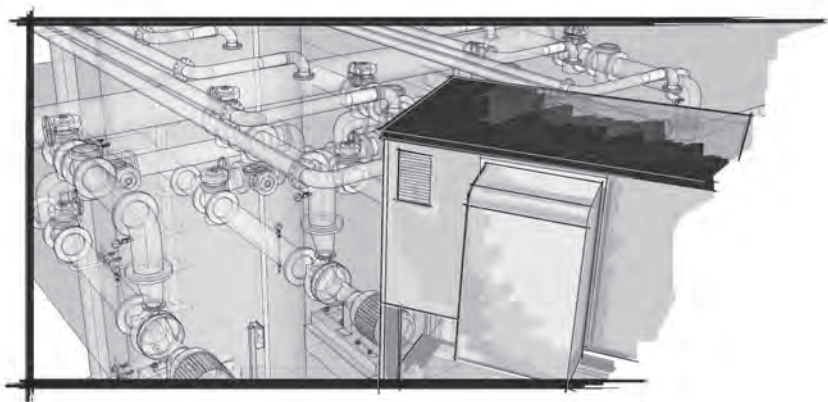
Residual water content 2%

---





# Horizontal drum



## MAR 56

**Ice type:**

Scale ice

**Condensing system:**

Air cooled

Water cooled

**Max daily production:**

426 kg



**Dimensions:**

W 905 mm

D 620 mm + 192 mm

H 1125 mm

## MAR 76

**Ice type:**

Scale ice

**Condensing system:**

Air cooled

Water cooled

**Max daily production:**

570 kg



**Dimensions:**

W 905 mm

D 620 mm + 192 mm

H 1125 mm

## MAR 106

**Ice type:**

Scale ice

**Condensing system:**

Air cooled

Water cooled

**Max daily production:**

785 kg



**Dimensions:**

W 905 mm

D 620 mm + 192 mm

H 1125 mm

## MAR 126

**Ice type:**

Scale ice

**Condensing system:**

Air cooled

Water cooled

**Max daily production:**

1000 kg



**Dimensions:**

W 905 mm

D 620 mm + 192 mm

H 1125 mm

## Compact configuration





- **Stainless steel horizontal evaporating drum:** for a life-long working endurance.
- **Floor standing compatible:** delivers ice straight into carts, trolleys or ice boxes.
- **Plug-and-work technology:** starts off and constantly produces ice thanks to a no-cycle harvesting system.
- **All water in / all ice out concept** (no cycles, zero water wastage): limits to almost zero excess energy, water and time wastage.
- **Compact configuration:** includes evaporator, compressor and condensing units, and it is supplied without panels on the group (optional).

## MAR 206

### Ice type:

Scale ice

### Condensing system:

Air cooled

Water cooled

### Max daily production:

1850 kg



### Dimensions:

W 1326 mm

D 661 mm + 192 mm

H 1125 mm

## MAR 306

### Ice type:

Scale ice

### Condensing system:

Air cooled remote

Water cooled

### Max daily production:

2450 kg



### Dimensions:

W 1326 mm

D 661 mm + 192 mm

H 1125 mm

# Horizontal drum



## MAR 78

### Ice type:

Scale ice

### Condensing system:

For connection to dedicated or centralized refrigeration system

### Max daily production:

570 kg



### Dimensions:

W 906 mm

D 621 mm + 192 mm

H 520 mm

## MAR 79

EcoX

### Ice type:

Scale ice

### Condensing system:

For connection to dedicated or centralized refrigeration system

### Max daily production:

540 kg



### Dimensions:

W 906 mm

D 621 mm + 192 mm

H 520 mm

## MAR 108

### Ice type:

Scale ice

### Condensing system:

For connection to dedicated or centralized refrigeration system

### Max daily production:

785 kg



### Dimensions:

W 906 mm

D 621 mm + 192 mm

H 520 mm

## MAR 109

EcoX

### Ice type:

Scale ice

### Condensing system:

For connection to dedicated or centralized refrigeration system

### Max daily production:

720 kg



### Dimensions:

W 906 mm

D 621 mm + 192 mm

H 520 mm

## MAR 128

### Ice type:

Scale ice

### Condensing system:

For connection to dedicated or centralized refrigeration system

### Max daily production:

1000 kg



### Dimensions:

W 906 mm

D 621 mm + 192 mm

H 520 mm

# Split configuration



- **Stainless steel horizontal evaporating drum:** for a life-long working endurance.
- **Floor standing compatible:** delivers ice straight into carts, trolleys or ice boxes.
- **Plug-and-work technology:** starts off and constantly produces ice thanks to a no-cycle harvesting system.
- **All water in / all ice out concept** (no cycles, zero water wastage): limits to almost zero excess energy, water and time wastage.
- **Split configuration:** evaporator supplied only. For connections to remote condensing units, either dedicated or centralized.
- **EcoX:** products using Natural refrigerants only, Hydrocarbons R290 and Carbon Dioxide R744.

## MAR 129 EcoX

### Ice type:

Scale ice

### Condensing system:

For connection to dedicated or centralized refrigeration system

### Max daily production:

1000 kg



### Dimensions:

W 906 mm  
D 621 mm + 192 mm  
H 520 mm

## MAR 208

### Ice type:

Scale ice

### Condensing system:

For connection to dedicated or centralized refrigeration system

### Max daily production:

1850 kg



### Dimensions:

W 1326 mm  
D 661 mm + 192 mm  
H 520 mm

## MAR 308

### Ice type:

Scale ice

### Condensing system:

For connection to dedicated or centralized refrigeration system

### Max daily production:

2450 kg



### Dimensions:

W 1326 mm  
D 661 mm + 192 mm  
H 520 mm

\* For all possible bin combinations available, please refer to chart at page 48.





**Breaking “the rules”...**







# Ice storage systems

## SB series



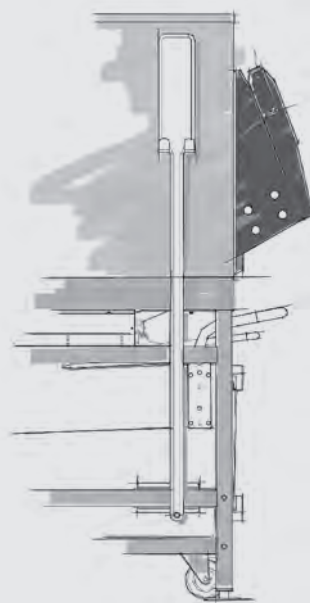
Slope front bins. Insulated, inside rounded corner, for daily turnover of ice. Easy to clean and maintain, removable gaskets. The reinforced hinges provide enhanced durability. The slope front makes access to ice as easy as possible. From 129 kg to 478 kg storage capacity range. Compatible with any type of ice.

## UBH series



Upright bins. First-in first-out concept provides a constantly fresh ice supply and high level of hygiene. Insulated, inside rounded corner, for higher capacity demand for ice and longer period stock. Sturdy enough to sustain even the largest ice makers. Front windows allow operators to always keep an eye on the product inside. From 553 kg to 1068 kg storage capacity. Compatible with any type of ice.

## SIS series



Upright bins with integral trolleys. First-in first-out concept provides a constantly fresh ice and high level of hygiene. 73 kg capacity trolleys, insulated and top-closed with lids, facilitate ice transportation. Ice falls down into trolleys gravitationally, eliminating the need of tiresome shoveling. Insulated, inside rounded corner, for higher capacity demand for ice and longer period stock. Sturdy enough to sustain even the largest ice makers. Front windows allow operators to always keep an eye on the product inside. From 210 kg to 759 kg storage capacity. Compatible with any type of ice.



**SB 193**  
Storage capacity:  
129 kg



**Dimensions:**  
W 569 mm  
D 841 mm  
H 1045 mm

**SB 322**  
Storage capacity:  
168 kg



**Dimensions:**  
W 568 mm  
D 872 mm  
H 1271 mm

**SB 393**  
Storage capacity:  
181 kg



**Dimensions:**  
W 768 mm  
D 843 mm  
H 1045 mm

**SB 530**  
Storage capacity:  
243 kg



**Dimensions:**  
W 768 mm  
D 866 mm  
H 1274 mm

**SB 550**  
Storage capacity:  
252 kg



**Dimensions:**  
W 1082 mm  
D 824 mm  
H 968 mm

**SB 948**  
Storage capacity:  
406 kg



**Dimensions:**  
W 1237 mm  
D 868 mm  
H 1274 mm

**SB 1025**  
Storage capacity:  
478 kg



**Dimensions:**  
W 1331 mm  
D 871 mm  
H 1272 mm

## Slope front storage bin

# UBH series

## UBH 1100

**Storage capacity:**

553 kg



**Dimensions:**

W 1225 mm

D 1128 mm

H 1427 mm

## UBH 1600

**Storage capacity:**

812 kg



**Dimensions:**

W 1530 mm

D 1128 mm

H 1731 mm

## UBH 2250

**Storage capacity:**

1068 kg



**Dimensions:**

W 1835 mm

D 1468 mm

H 1292 mm

## Upright storage bin

## SIS 300

### Storage capacity:

137 kg + 73 kg ice cart



### Dimensions:

W 884 mm  
D 1025 mm  
H 1343 mm

## SIS 1350

### Storage capacity:

613 kg + 73 kg + 73 kg ice carts



### Dimensions:

W 1753 mm  
D 1267 mm  
H 1803 mm

## SIS 700

### Storage capacity:

318 kg + 73 kg ice cart



### Dimensions:

W 885 mm  
D 1267 mm  
H 1803 mm

## Accessories carts and totes





# Head/bin combination chart

	BIN	SB193	SB322	SB393	SB530	SB550	SB948
HEAD	Kg/24h	129	168	181	243	252	406
MXG327	152	✓	✓				
MXG328	150	✓	✓				
MXG427	170	✓	✓			BINTOPMXGSB55	
MXG428	195	✓	✓			BINTOPMXGSB55	
MXG437	170			✓	✓	BINTOPMXGSB55	
MXG438	195			✓	✓	BINTOPMXGSB55	
MXG638	340			✓	✓	BINTOPMXGSB55	CBT48EAMCD
MXG938	400			✓	✓	BINTOPMXGSB55	CBT48EAMCD
MFN46	270	CBT22EFCD	CBT22EFCD	CBT30EFSD	CBT30EFSD	CBT42EFSD	CBT48FMCD
MFN56	470	CBT22EFCD	CBT22EFCD	CBT30EFSD	CBT30EFSD	CBT42EFSD	CBT48FMCD
MFN86	1900						
MFN88	1900						
MF26	120	✓	✓	CBT30EFSD	CBT30EFSD	CBT42EFSD	CBT48FMCD
MF36	200	✓	✓	CBT30EFSD	CBT30EFSD	CBT42EFSD	CBT48FMCD
MF46	330	CBT22EFCD	CBT22EFCD	CBT30EFSD	CBT30EFSD	CBT42EFSD	CBT48FMCD
MF47	300	CBT22EFCD	CBT22EFCD	CBT30EFSD	CBT30EFSD	CBT42EFSD	CBT48FMCD
MF56	600			CBT30EFSD	CBT30EFSD	CBT42EFSD	CBT48FMCD
MF58	600			CBT30EFSD	CBT30EFSD	CBT42EFSD	CBT48FMCD
MF59	700			CBT30EFSD	CBT30EFSD	CBT42EFSD	CBT48FMCD
MF66	1150						
MF68	1220						CBT48FMCD
MF69	1400						CBT48FMCD
MF86/88	2500						
MAR56	426						
MAR76/78	570						
MAR79	540						
MAR106/108	785						
MAR109	720						
MAR126/128/129	1000						
MAR206/208	1850						
MAR306/308	2450						

✓ Perfect combination between ice-maker and bin  
CBT xxxxxxxxx Need additional bin top

● Ice chute cut-out performed upon installation

SB1025	UBH1100	UBH1600	UBH2250	SIS300	SIS700	SIS1350	BIN	
478	553	812	1068	137 + 73	318 + 73	613+73+7	Kg/24h	HEAD
							152	MXG327
							150	MXG328
	●	●			●	●	170	MXG427
	●	●			●	●	195	MXG428
		●				●	170	MXG437
		●				●	195	MXG438
CBT52EAMCD		●				●	340	MXG638
CBT52EAMCD		●				●	400	MXG938
CBT52FMCD	●			●	●		270	MFN46
CBT52FMCD	●	●		●	●		470	MFN56
			●			●	1900	MFN86
			●			●	1900	MFN88
				●			120	MF26
				●			200	MF36
CBT52FMCD	●			●	●		330	MF46
CBT52FMCD	●			●	●		300	MF47
CBT52FMCD	●	●		●	●		600	MF56
CBT52FMCD	●	●			●		600	MF58
CBT52FMCD	●	●			●		700	MF59
	●	●	●			●	1150	MF66
CBT52FMCD	●	●	●			●	1220	MF68
CBT52FMCD	●	●	●			●	1400	MF69
			●			●	2500	MF86/88
	●	●	●	●	●	●	426	MAR56
	●	●	●	●	●	●	570	MAR76/78
	●	●	●	●	●	●	540	MAR79
	●	●	●		●	●	785	MAR106/108
	●	●	●		●	●	720	MAR109
	●	●	●		●	●	1000	MAR126/128/129
		●	●			●	1850	MAR206/208
		●	●			●	2450	MAR306/308



# Global supplier for global markets

SCOTSMAN INTERNATIONAL - HQ  
Europe, Africa, Middle East, Asia & Pacific  
Scotsman Ice  
Via Lainate 31  
20010 Pogliano Milanese  
Milan - Italy  
Ph: +39-02-93960 208  
Fax: +39-02-93960 201  
sales@scotsman.it  
www.scotsman-ice.it

SCOTSMAN USA - HQ  
USA, Canada, Latin America  
Scotsman Ice Systems  
101 Corporate Woods Parkway  
Vernon Hills, IL 60061  
Ph: +1-847-215 4500  
Fax: +1-847-913 9844  
sales@scotsman-ice.com  
www.scotsman-ice.com



CHINA MAINLAND  
Scotsman Ice Systems (Shanghai) Co., Ltd.  
Room 2505, Building 2  
20 Xuhong Middle Road,  
Xuhui District  
Shanghai China 200235  
Ph: +86-21-6131 3200  
Fax: +86-21-6131 3330  
sales@scotsman-china.com  
www.scotsman-china.com

ASIA & PACIFIC  
Scotsman Industries Singapore Pte Ltd  
140 Paya Lebar Road  
#08-09 AZ @ Paya Lebar  
Singapore 409015  
Ph: +65-6738 5393  
Fax: +65-6738 1959  
scotsman@scotsman.com.sg

HOTEL  
& RESORT

QSR  
& CASUAL DINING

EATERIES  
& FINE DINING

CONVENIENCE STORE  
& FOOD RETAIL



**MIDDLE EAST & NORTH AFRICA**

Scotsman Ice

Regional Branch (ME&A)

PO Box: 42026, Sharjah, UAE

Hamriyah Free-Zone Phase # 2,

Logistic Village Warehouse # LV-10/A

Ph: +9716-5262-944/945

Mob. Ph.+971-505-505-980

m.dawood@scotsman.ae

**SOUTH & CENTRAL AFRICA**

Scotsman Ice Systems SA (Pty) Ltd

PO Box: 30072, Jetpark, 1467

Unit 4 Lakeview Business Park

8-10 Yaldwyn Road,

Jetpark, Boksburg, RSA

Ph: +27-11-826-6742/1,

+27-087-720 0245/6/7/8

Fax: +27-11-826-4123,

+27-086-634 0803

stuart@scotsmansa.co.za

jennifer@scotsmansa.co.za

**SPAIN**

Scotsman España, S.L.U.

c/ Galapagar, 12

Poligono Industrial Ventorro del Cano

28925 Alcorcon (Madrid)

Ph: +34-91-1109796

Fax: +34-91-6337423

scotsman@scotsman-espana.es

www.scotsman-espana.es





[www.scotsman-ice.it](http://www.scotsman-ice.it)



2/2019 - Details and data herewith contained are supplied in good faith by Scotsman and are subject to updates and changes.

**Milano - Madrid - Chicago - Dubai - Singapore - Shanghai - Johannesburg**